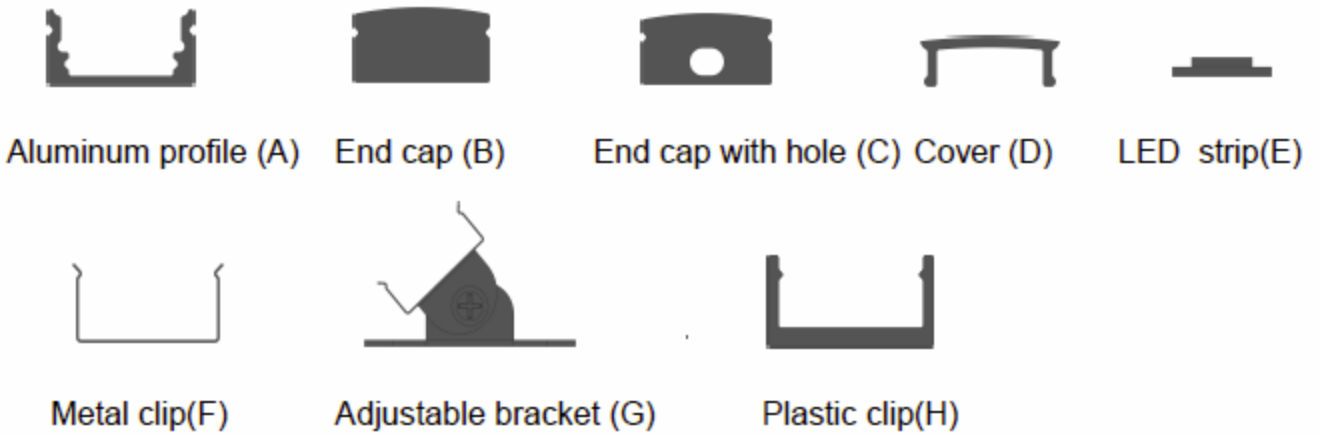

Main parts needed to mount the extrusion


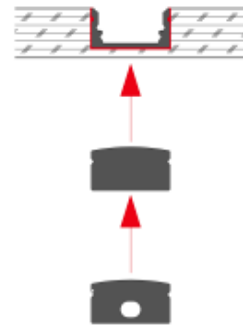
Specification	
Aluminum Profile:	ALP6002R
Diffuser:	PCdiffusedcover/PMMAopalcover/PMMAsemi-clearcover/PMMAclearcove
Length:	(79") 79 inches
Finish:	Silver Anodized
Installation:	Recessed/Surface

Other Mounting Instruction

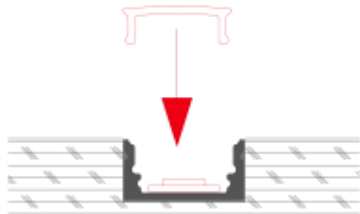
Option#1 - 1. Spread Glue in the Groove



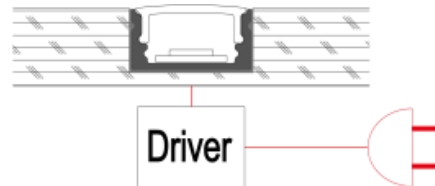
2. Insert the End Cap (B) and (C), then attach the Profile to the Groove



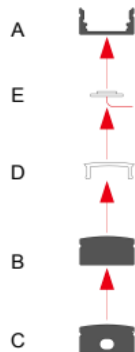
3. Mount the LED strip (E), insert the cover (D), Lead out the power cable



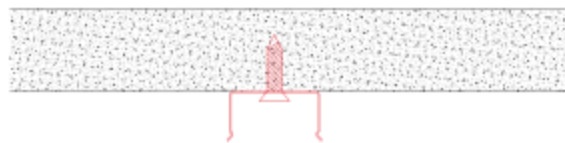
4. Run the cable to to the power source, then connect power



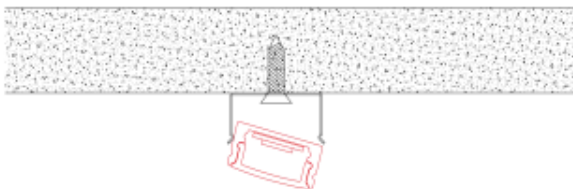
Option#2 - 1. Mount the LED Strip (E), insert the cover (D), insert end cap (B)



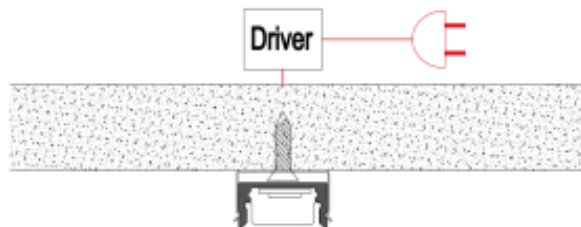
2. Mount the metal clip (F) on the board



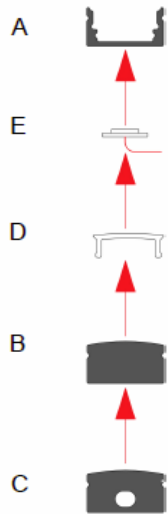
3. Mount the profile on the clip, lead out the power cable



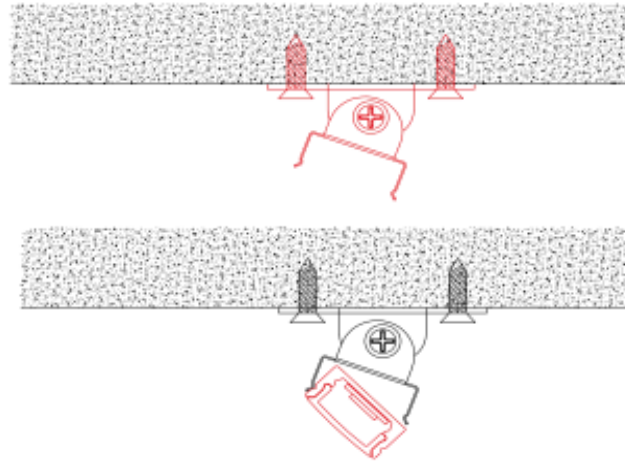
4. Run the cable to the power source, connect power



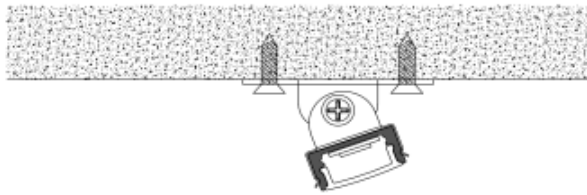
Option#3 - 1. Mount the adjustable clip (G) on the wall



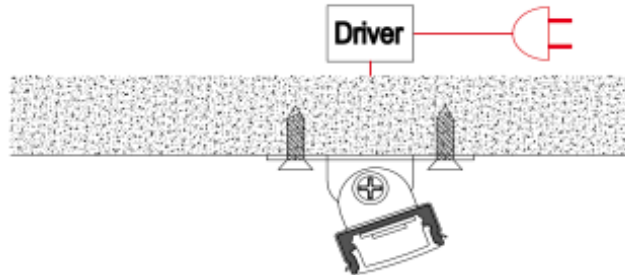
2. Mount the profile on the clip, lead out the power cable



3. Adjust the profile angle

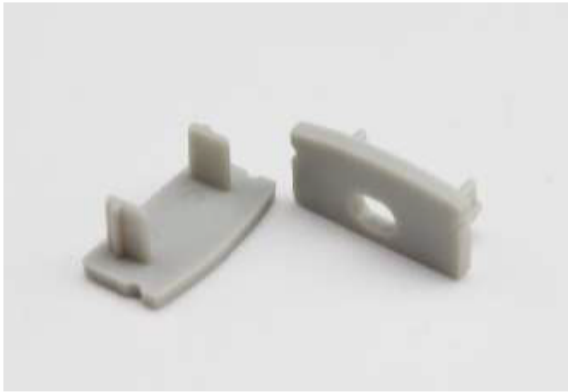


4. Run the cable to the power source, connect power



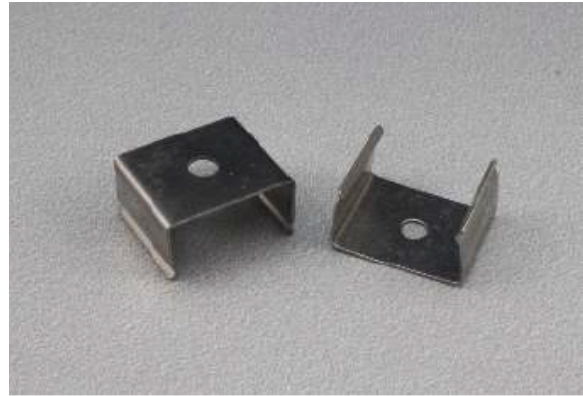
ALP6002R Accessories

EC-ALP6002



End Cap

MC-ALP6002



Metal Clips With Screws

JC90-ALP6002



90 Degree Connector

JC180-ALP6002



180 Degree Connector

RC-ALP6002R



Rotatable Clip