

Main parts needed to mount the extrusion



Aluminum profile (A)



End cap (B)



End cap with hole (C)



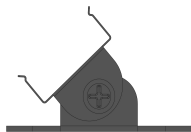
Cover (D)



LED strip(E)



Metal clip(F)



Adjustable bracket (G)



Plastic clip(H)

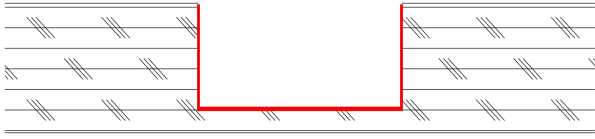
Tools needed for mounting:

Screwdriver and Glue

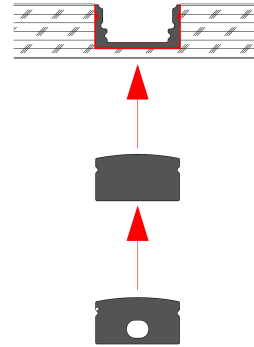
sales@infigreen.com

Mounting Instruction

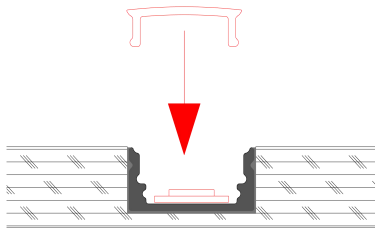
The first option: 1. Spread glue in the groove.



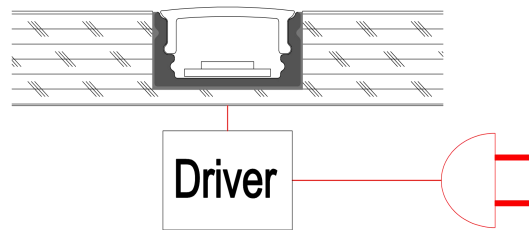
2. Insert the end cap (B) and (C), then attach the profile to the groove.



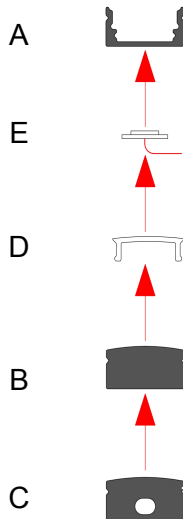
3. Mount the LED strip (E), insert the cover (D), lead out the power cable.



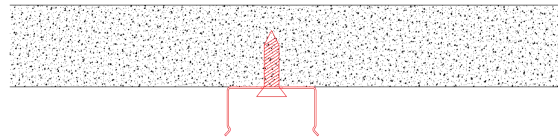
4. Run the cable to the power source, connect power.



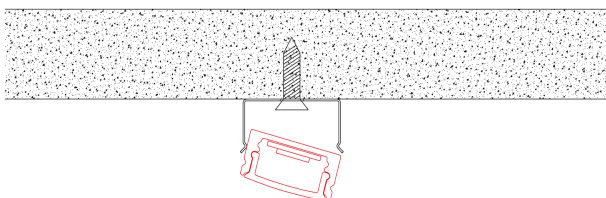
The second option: 1. Mount the LED strip (E), insert the cover (D), insert end cap (B)



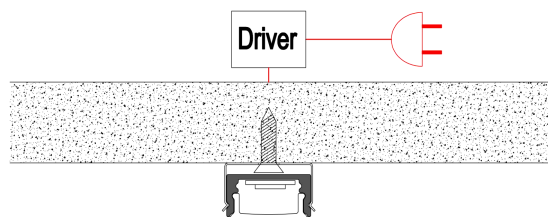
2. Mount the metal clip (F) on the board.



3. Mount the profile on the clip, lead out the power cable.

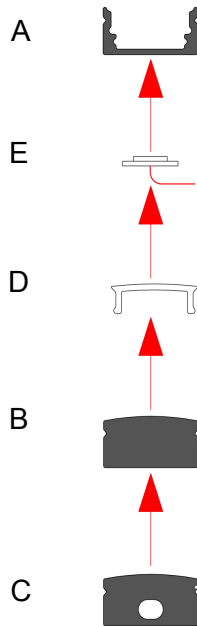


4. Run the cable to the power source, connect power.

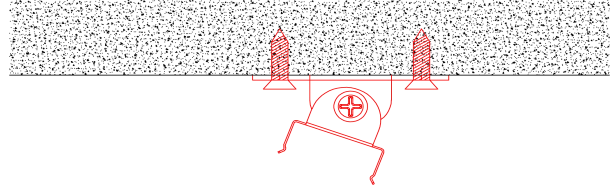


Mounting Instruction

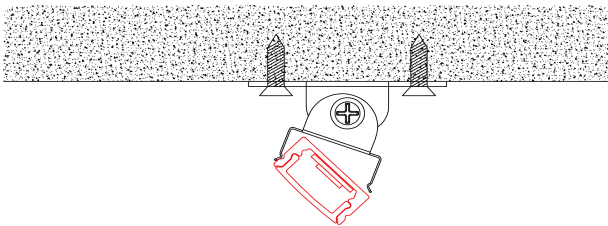
The third option: 1. Mount the LED strip(E),insert the cover (D),end cap(B) and(C).



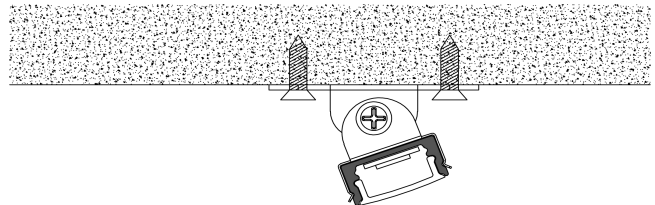
2. Mount the adjustable clip(G) on the wall.



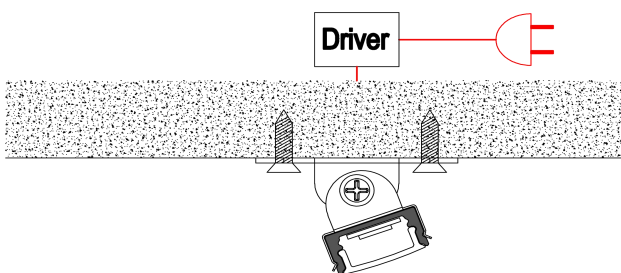
3. Mount the profile on the clip, lead out the power cable.



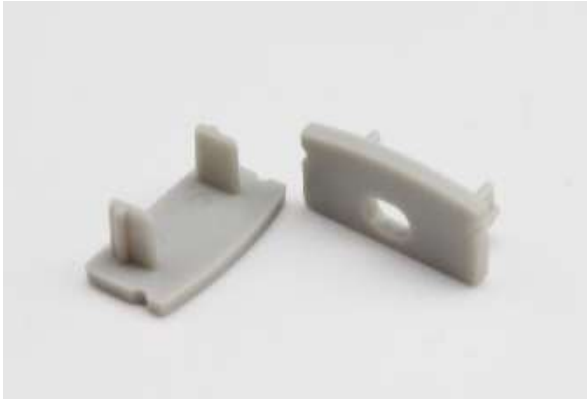
4. Adjust the profile angle.



5. Run the cable to the power source, connect power.



EC-ALP6002



End Caps

MC-ALP6002



Metal Clips with Screws

JC90-ALP6002



90 Degree Connector

JC180-ALP6002



180 Degree Connector

RC-ALP6002R



Rotatable Clip