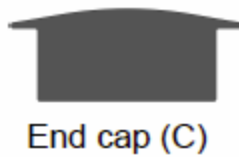

Main parts needed to mount the extrusion


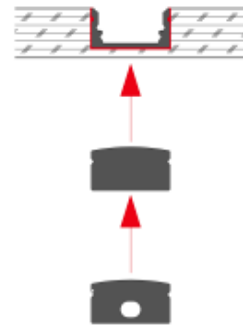
Specification	
Aluminum Profile:	ALP6013
Diffuser:	Opal Matte Cover
Length:	(6' 7")
Finish:	Silver Anodized
Installation:	Recessed

Other Mounting Instruction

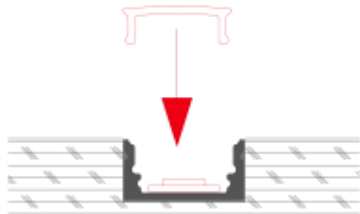
Option#1 - 1. Spread Glue in the Groove



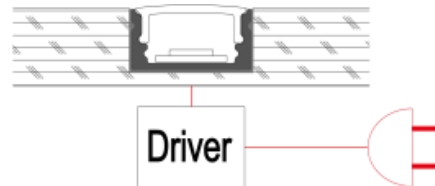
2. Insert the End Cap (B) and (C), then attach the Profile to the Groove



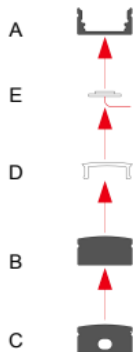
3. Mount the LED strip (E), insert the cover (D), Lead out the power cable



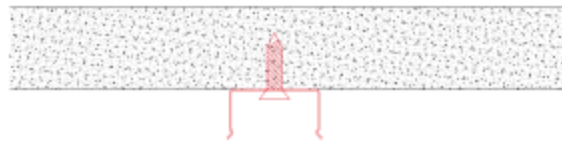
4. Run the cable to to the power source, then connect power



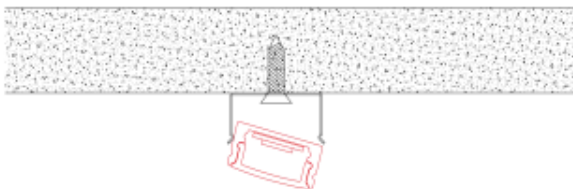
Option#2 - 1. Mount the LED Strip (E), insert the cover (D), insert end cap (B)



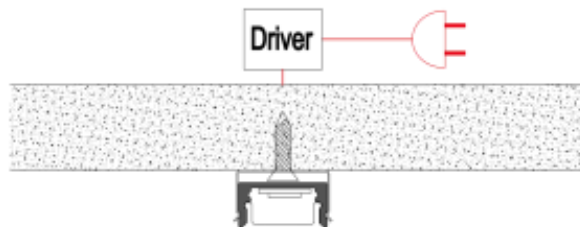
2. Mount the metal clip (F) on the board



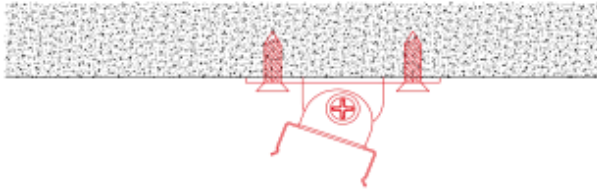
3. Mount the profile on the clip, lead out the power cable



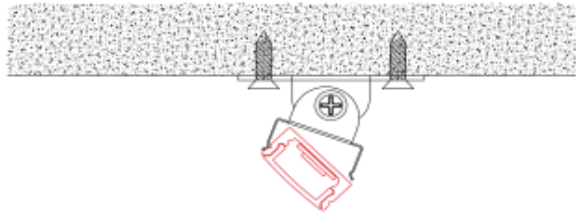
4. Run the cable to the power source, connect power



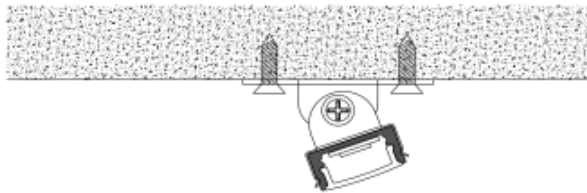
Option#3 - 1. Mount the adjustable clip (G) on the wall



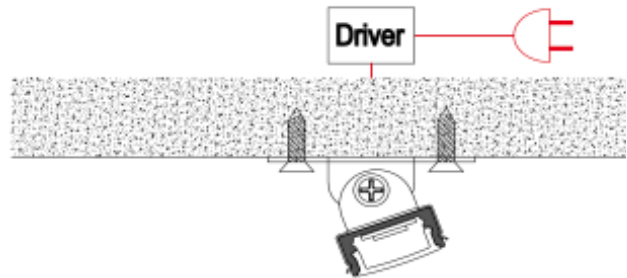
2. Mount the profile on the clip, lead out the power cable



3. Adjust the profile angle

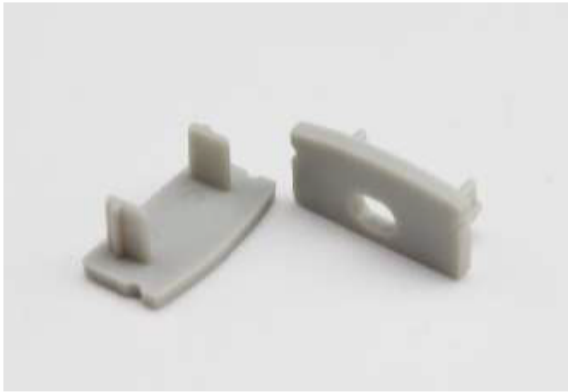


4. Run the cable to the power source, connect power



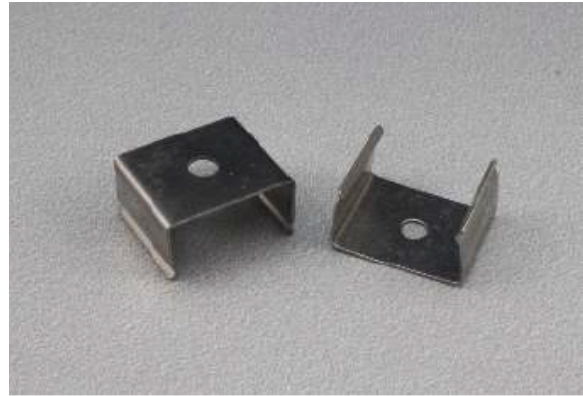
ALP6002R Accessories

EC-ALP6013



End Cap

MC-ALP6013



Metal Clips With Screws

RC-ALP6013



Rotatable Clip