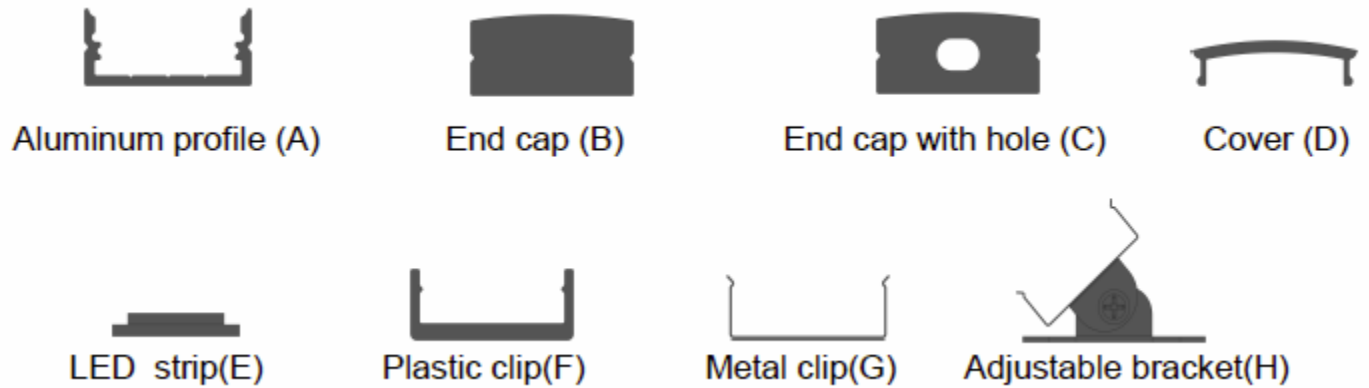

**Main parts needed to mount the extrusion**


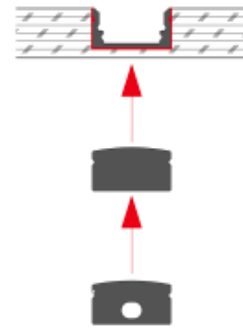
Specification	
Aluminum Profile:	ALP6014
Diffuser:	Opal Matte Cover
Length:	(6' 7")
Finish:	Silver Anodized
Installation:	Recessed

## Other Mounting Instruction

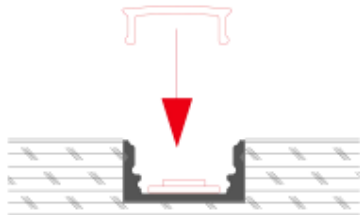
**Option#1** - 1. Spread Glue in the Groove



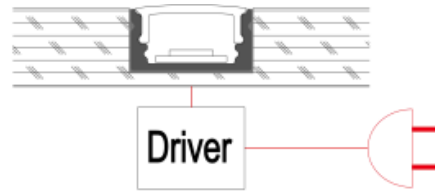
2. Insert the End Cap (B) and (C), then attach the Profile to the Groove



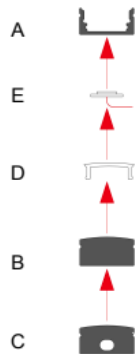
3. Mount the LED strip (E), insert the cover (D), Lead out the power cable



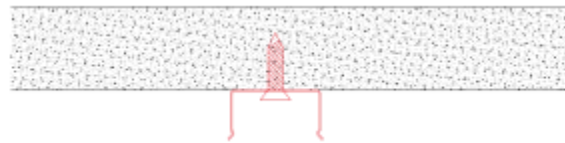
4. Run the cable to to the power source, then connect power



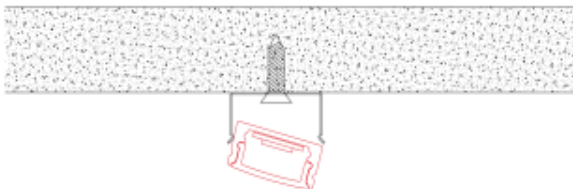
**Option#2** - 1. Mount the LED Strip (E), insert the cover (D), insert end cap (B)



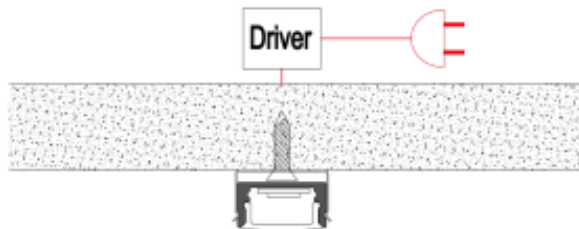
2. Mount the metal clip (F) on the board



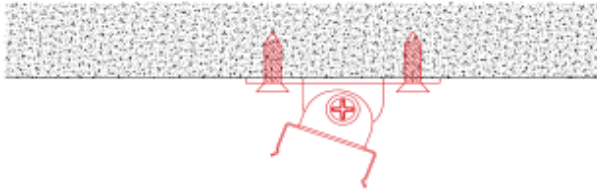
3. Mount the profile on the clip, lead out the power cable



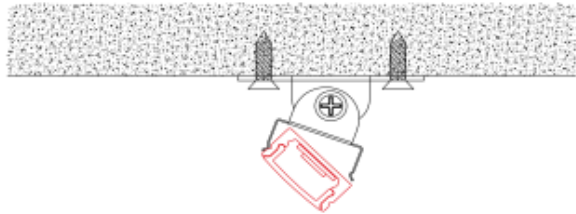
4. Run the cable to the power source, connect power



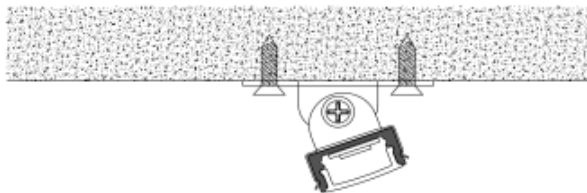
**Option#3** - 1. Mount the adjustable clip (G) on the wall



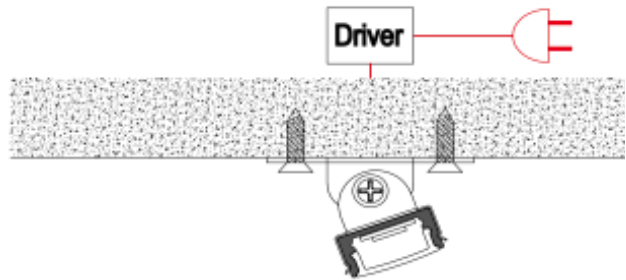
2. Mount the profile on the clip, lead out the power cable



3. Adjust the profile angle

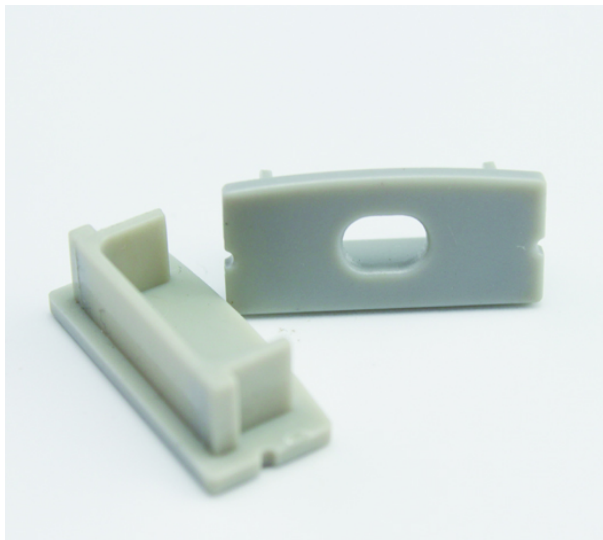


4. Run the cable to the power source, connect power



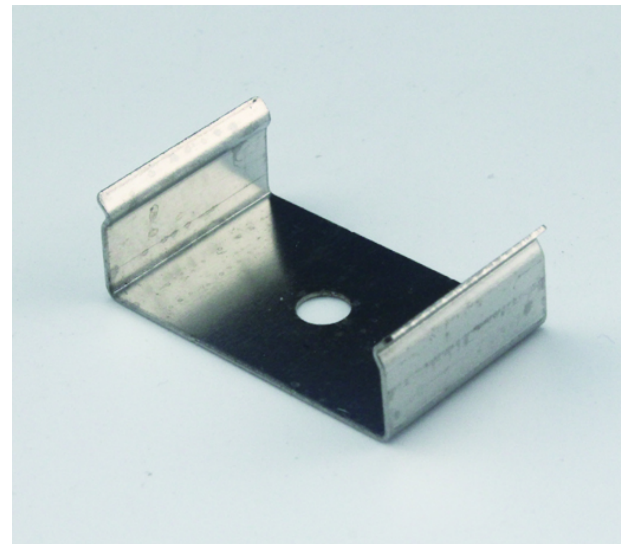
### ALP6014 Accessories

**EC-ALP6014**



**End Cap**

**MC-ALP6014**



**Mounting Clip**