
Main parts needed to mount the extrusion


Aluminum profile (A)



End cap (B)



End cap with hole (C)



Cover (D)



LED strip(E)



Plastic clip(F)



Metal clip(G)



Adjustable bracket(H)

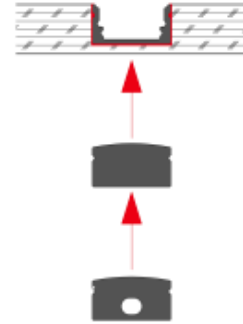
Specification	
Aluminum Profile:	ALP6071
Diffuser:	Opal Matte Cover
Length:	(6' 7")
Finish:	Silver Anodized
Installation:	Recessed

Other Mounting Instruction

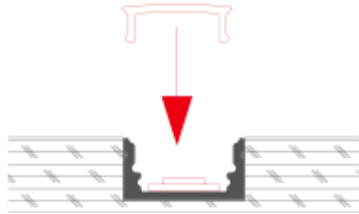
Option#1 - 1. Spread Glue in the Groove



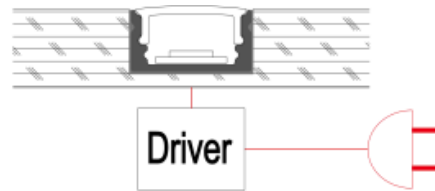
2. Insert the End Cap (B) and (C), then attach the Profile to the Groove



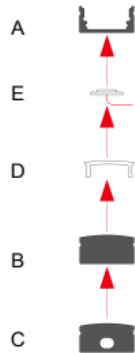
3. Mount the LED strip (E), insert the cover (D), Lead out the power cable



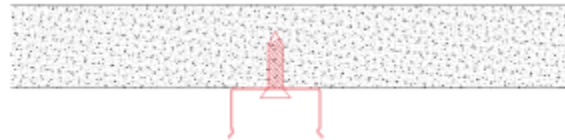
4. Run the cable to to the power source, then connect power



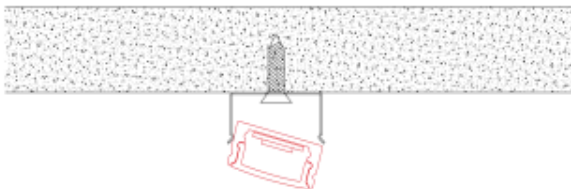
Option#2 - 1. Mount the LED Strip (E), insert the cover (D), insert end cap (B)



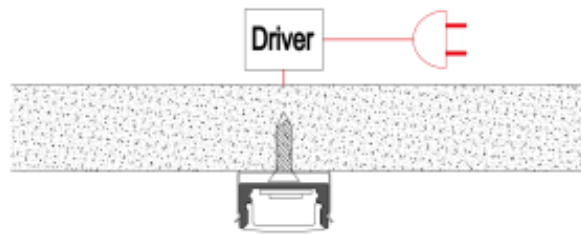
2. Mount the metal clip (F) on the board



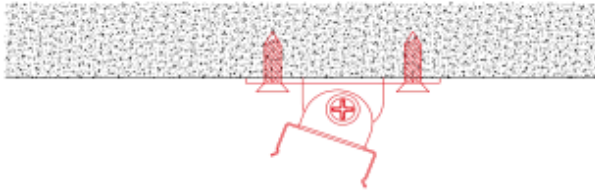
3. Mount the profile on the clip, lead out the power cable



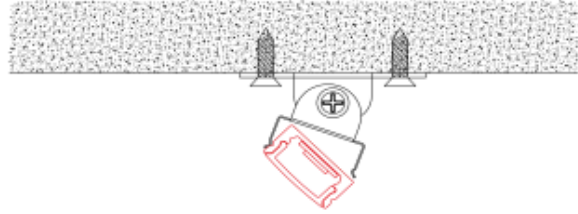
4. Run the cable to the power source, connect power



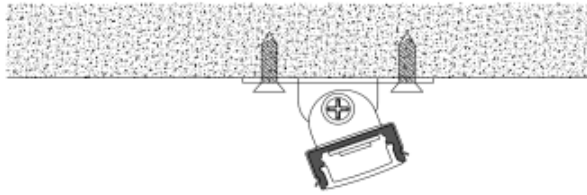
Option#3 - 1. Mount the adjustable clip (G) on the wall



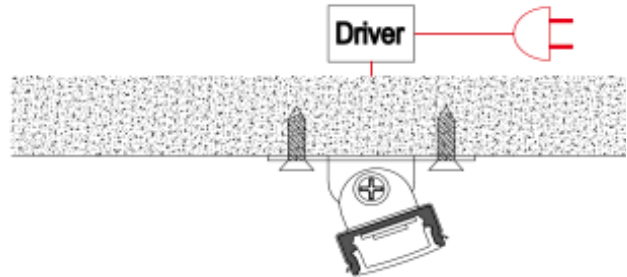
2. Mount the profile on the clip, lead out the power cable



3. Adjust the profile angle

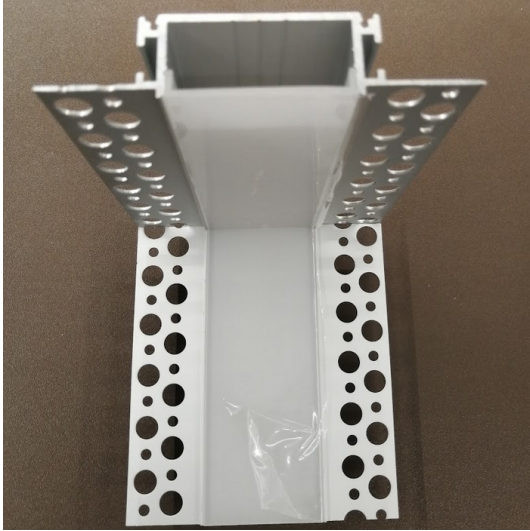


4. Run the cable to the power source, connect power

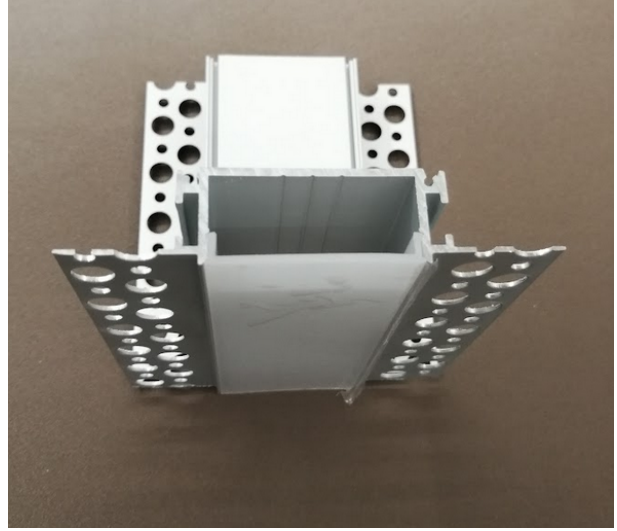


ALP6071 Accessories

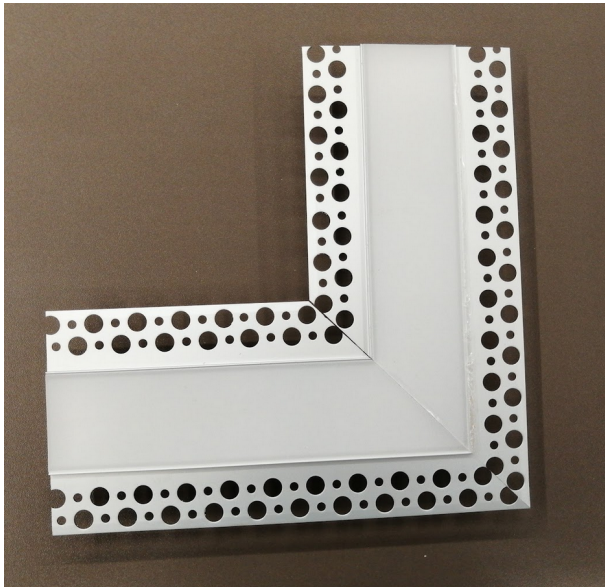
JC90IL-ALP6071



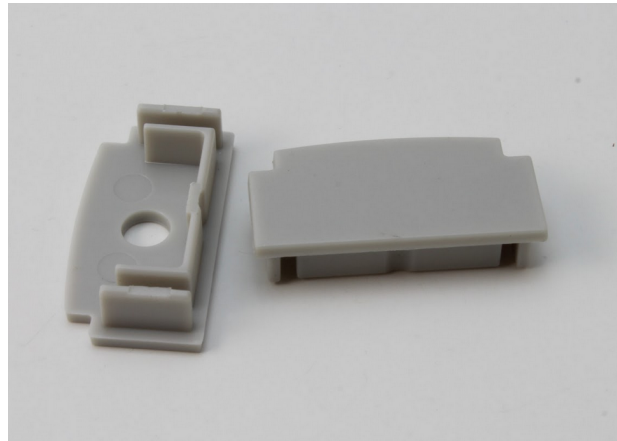
JC900L-ALP6071



JC90-ALP6071



ALP6071



END CAP



EC-ALP6081



ST-ALP6081



FLC90-ALP6081