
**Main parts needed to mount the extrusion**


Aluminum profile(A)



End caps (B)



Cover (C)



LED strip (D)

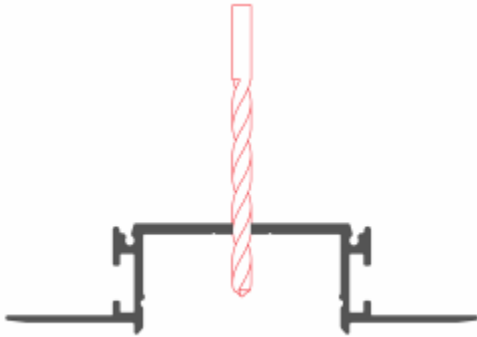


Screw(E)

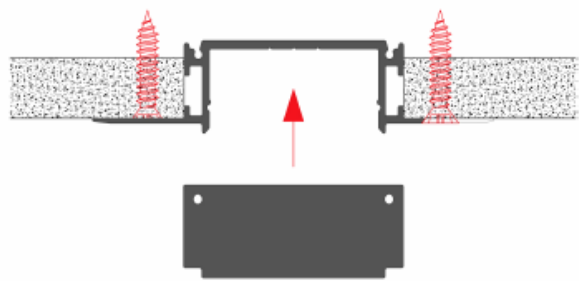
Specification	
Aluminum Profile:	ALP6081
Diffuser:	Opal Matte Cover
Length:	(6' 7")
Finish:	Silver Anodized
Installation:	Recessed

## Other Mounting Instruction

1. Drill a hole in the aluminum profile (A) for the power cable.



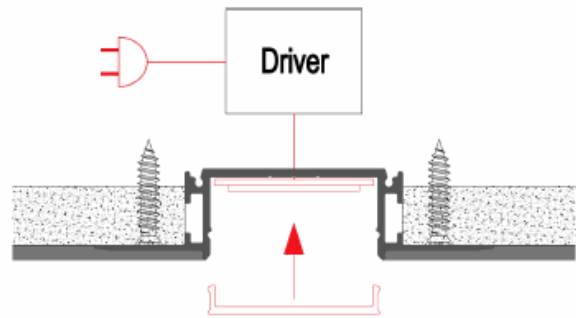
2. Mount the end caps (B), then mount the profile on the ceiling.



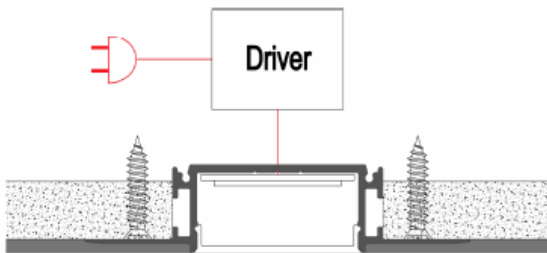
3. Apply a layer of plaster to the aluminum profile and ceiling, and then paint the surface to finish.



4. Mount the LED strip (D), insert the cover (C), lead out the power cable.

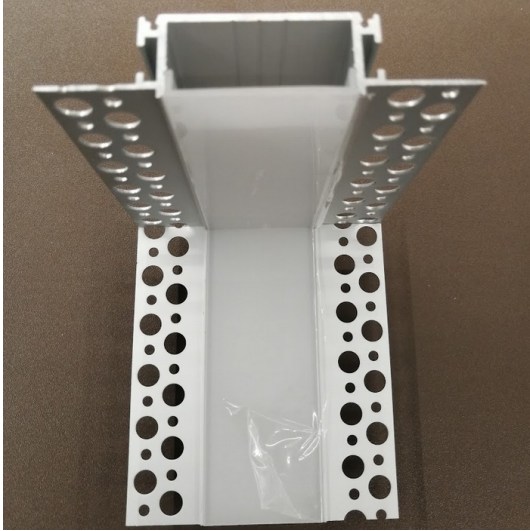


5. Run the cable to the power source, connect power.

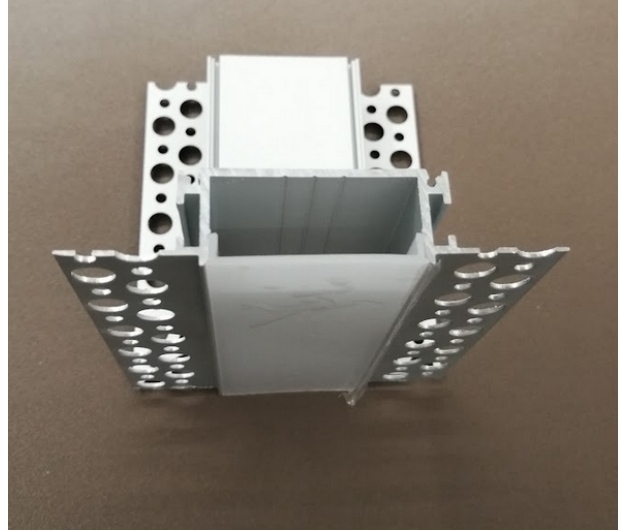


### ALP6081 Accessories

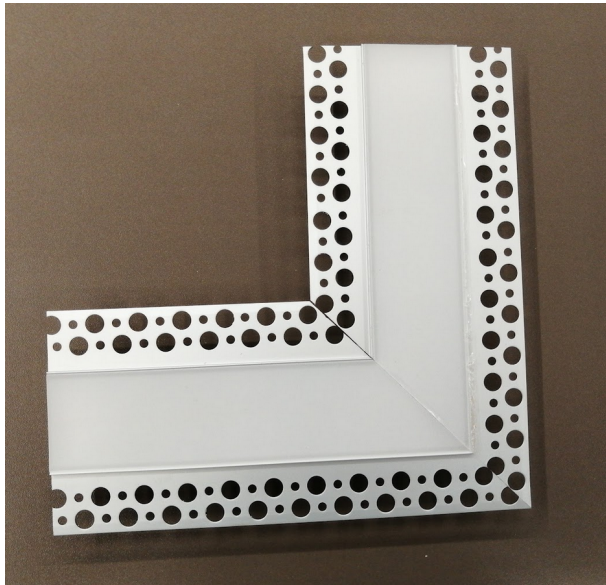
JC90IL-ALP6081



JC900L-ALP6081



JC90-ALP6081



ALP6081



END CAP