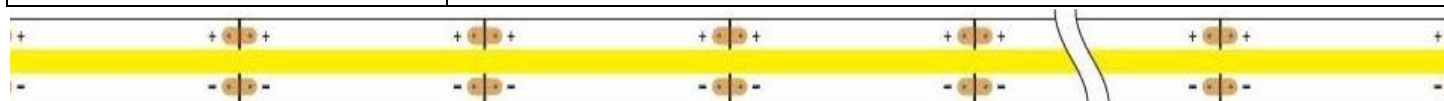




**Product Description**

Infinity Green (IG) Lighting Corporation LED Strip Kit provides a full set of equipment to help you achieve your goal for visual comfort. We bring Flexible LED linear lights to a whole new level that provides a unique architectural design and variety of features. Not all LED products are made equal. Our superior quality flexibility eliminates the unwanted diodes and leaves with almost no footprint which blends in all the applications.



**Specification Information**

Maximum run:	16.4ft	IP20	
Rated Power (LED Strip):	24v/30W	90 CRI	
Operating Temperature:	15.8° F ~ 100.4° F	User and Installation Friend	
Cutting Increment:	1.97"	Long Distance/Great Flexibility	
Lumen per watt:	105	3M Installation Stick Tape	
Power supply input range:	AC100-240V, 50-60Hz	Dimming/Mounting Option	
Rated Power (Adapter):	36V1.5A/36W	Adjustable Cutting	
Colors:	30K/50K/B*/R*/Y*/G*		

**Ordering Steps**




**Product Purchasing Guideline**

	Model Number	-	Color Temperature	-	Meter
Ex:	LS	-	2430	-	
	LS		2430	→	3000K
			2450	→	5000K
			24BL	→	BLUE*
			24GR	→	GREEN*
			24RED	→	RED*
			24YW	→	YELLOW*

\* Contact Us for Color LED



Making it easy to add additional products is one of the best and easiest ways to boost the value of each design. We have a list of possible accessories you could use for assistance for your installations of LED.

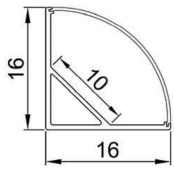
	<p><b>PL-24-DC</b> <b>Direct Connectors</b></p>
	<p><b>PL-24-CC6</b> <b>6" Jumper Connectors</b></p>
	<p><b>PL-24-PC-HW</b> <b>6" Hard-Wire Power Connectors</b></p>



**LED-Flexible Spotless Linear Kit**

One of the most common ways to install LED strip light is with an LED channel. In addition to protecting and concealing your LED strip, it provides a polished and professional look for your lighting installation. We offer channels that can be surface mounted, hung, clip mounted, recessed, magnetically adhered and stair mounted. Channel systems consist of two main parts: aluminum channel and a diffuser or lens. We offer a number of standard designs, as well as some specialized extrusions for specific applications. (More Detail: [www.infingreen.com/channel-led/](http://www.infingreen.com/channel-led/))

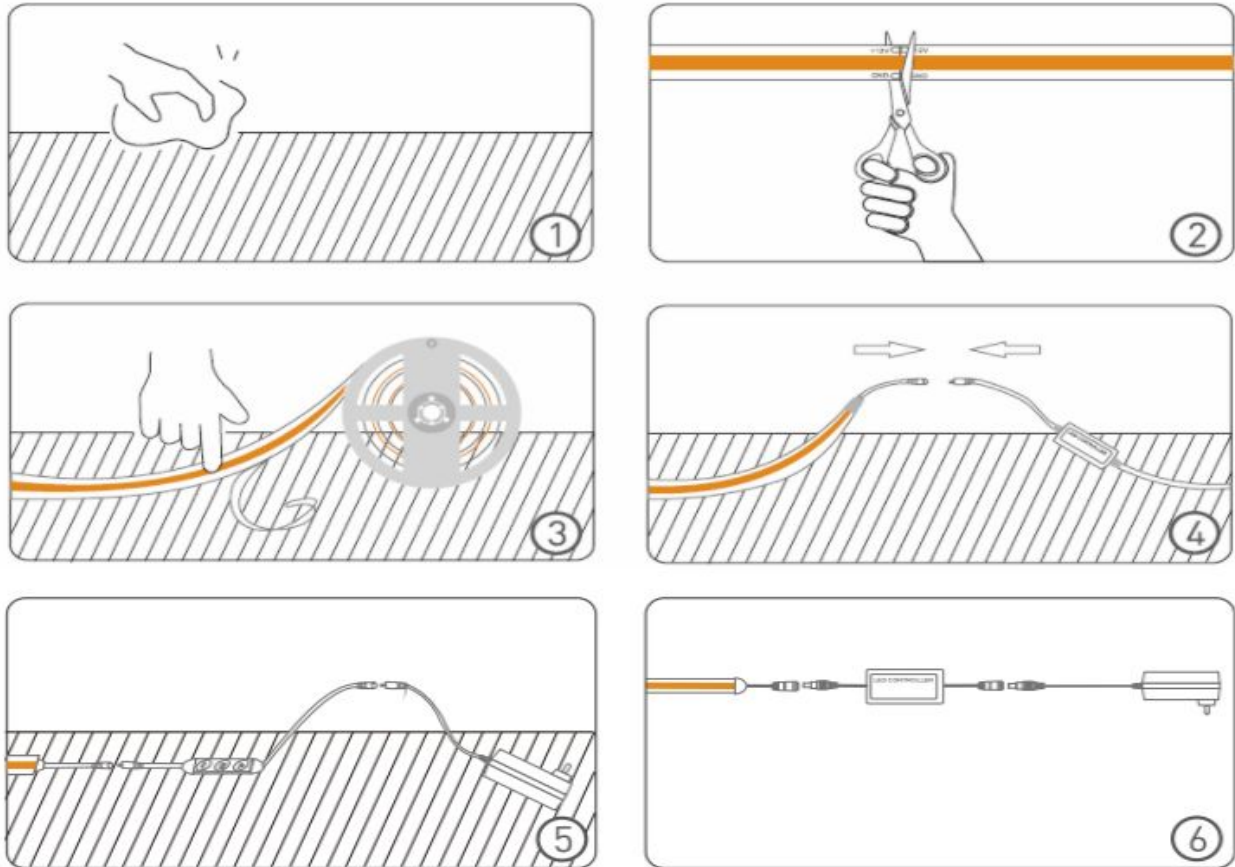
**Aluminum Channel (Accessories)**

	<p>ALP6002 - Slim Aluminum LED Profile For Surface Mounted</p> 		<p>ALP6081R Aluminum profile with PC opal cover</p> 
	<p>ALP6013 Aluminum LED Profile For Recessed</p> 		<p>ALP6071 Aluminum LED Profile Trimless Recessed</p> 
	<p>ALP6014 Aluminum LED Profile For Surface Mounted</p> 		<p>ALP6110R Trimless Recessed LED Aluminum Profile Channel</p> 
	<p>ALP6083R Aluminum Profile with PC opal cover</p> 		<p>ALP6110S Aluminum LED Profile with linch Square Lens</p> 
	<p>ALP6006 Aluminum Profile For Corner Mounted</p> 		<p>ALP6001R Aluminum LED Profile for Recess Mounted</p> 



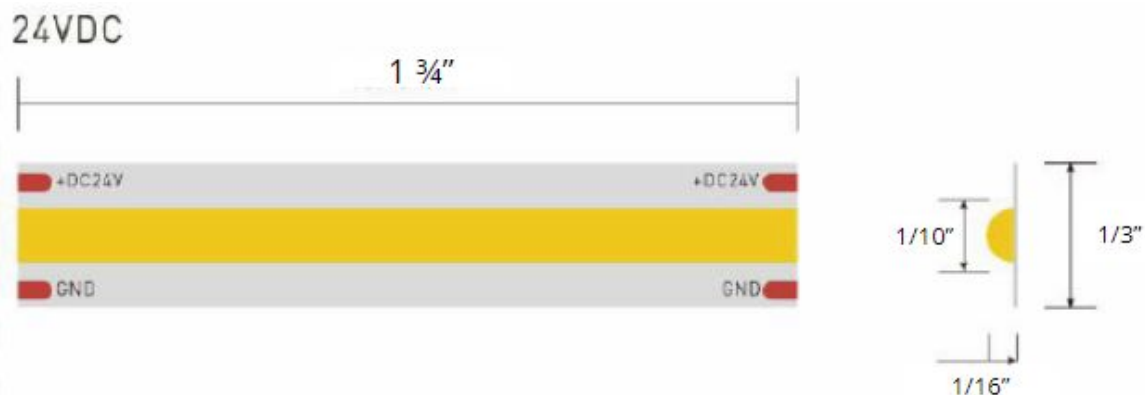
Infigreen: LS-24-XXXX

## LED-Flexible Spotless Linear Kit Installation Steps



### Guidelines

1. The max running length is 10 meters, better with a heat sink to help heat dissipation.
2. Usually, most of the power supply has an efficiency between 80%-95%, so when choosing the power supply, the total watts of the strips should be smaller than 80% of the rated power of the LED Strip Lights.
3. Adjusted the running length by only cutting where the small scissors are located on the strip.
4. Peel the 3M tape off and tape on the area and run the core.
5. Connect the Strip with the power supply





## Safety Instructions

1. Open the package and check if all the components are complete, then unrolling the LED strip, and connect the LED strip to the controller and driver, and light it up to check if all parts are in good condition or not. The connect method should refer to the wiring diagram.
2. Clean the surface on the installation surface, make sure it's clean, dry, and smooth, Or it will reduce the adhesiveness of the back tape. Remember the back tape could be only used one time. The LED strip will fall off if the surface is not in good condition or the back tape is reused.
3. Measure the length required on the surface and cut the LED strip accordingly.
4. Tear off the back tape and paste the strip to the surface smoothly and correctly. Connect the LED strip to the controller and driver based on the diagram.
5. Fix the driver, make sure all the components are tightly and not fall off.

## Warning

1. Do not use it outdoors or underwater.
2. Disconnect the power before installation.
3. Do not use the products close to flammable materials.
4. Do not power the LED strip while it's rolled, or it will overheat and damage.
5. Do not power the LED strip by another power source, like 120VAC or 120VDC, the electronic components will be damaged.
6. Keep the components from children.
7. When installing the Any Led Strip, please use the installation safety instruction. The Led strip can be bent but not distorted, as shown below

